

Foundations of portrait drawing & painting

MODULE 2: The facial features

Now that you've acquired the skill set of rendering the architecture of facial form we proceed to understanding the structures of the facial features in both frontal and the 7/8's profile view.

Print out the images on high quality photographic paper. Take them to your local shop. I have taken the liberty of adding a white border to 8 x 10" which is what most shops can readily print. The images themselves are approximately 7 x 9"

Your drawing should also be 7 x 9". Or even better: 7 x 8.9" which is a $\sqrt{\Phi}$ dynamic rectangle. This will further sensitize your perception to this all-important rectangle ($\sqrt{\Phi} = 1.272$).

You will need to prepare seven (minimum) drawing sheets.

I do stretch and tone my drawing sheets with India ink. This, of course, is elective.

SUPPLY LIST:

Ideally two drawing boards. No smaller than 11 x 14", no larger than 16 x 20"

Ideally two easels, but one will suffice providing that you have access to a wall to tape your reference images on

Paper: I am using Stonehenge, a 22 x 30" sheet (250 g/m²) which I carefully tear (this gives a nice deckled edge) to their respective sizes. I prefer a light gray paper.

Nitram compressed charcoal pencil. H and HB. This is elective.

Derwent graphite pencils: 9B, HB & 2H.

White conte pencil. This, too, is elective.

Paper stumb. Also elective.

A conte holder, large enough to plug your pencils into, is a useful training device for when you begin to paint

A thin measuring stick such as a knitting needle. This is your measuring stick.

A kneaded eraser.

A plumb line. In a fix you can use dental floss with a small weight (a wad of gum affixed to a paper clip even) attached to it.

A safety razor or X-acto knife and fine-grade sandpaper for sharpening your pencils.

MODULE 2: The Facial Features

Module 2 is comprised of eighteen chapters. Five hours, fifty minutes

Each chapter is numbered sequentially. This keeps everything in order so that you can readily match up the video lesson with the reference image.

I highly recommend keeping your download references in a dedicated folder on your computer.

THE LESSONS:

201-MODULE-2-FACIAL-FEATURES-A word.

Running time: 3:06

202-MODULE-2-FACIAL-FEATURES-Paper preparation.
Running time: 22:41

203-207-MODULE-2-FACIAL-FEATURES-The-Eye-frontal.

Part 1. Running time: 26:02

Part 2. Running time: 24:29

Part 3. Running time: 19:55

Part 4. Running time: 13:19

Part 5. Running time: 17:30



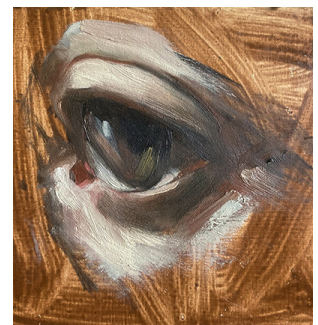
Download: artacademy.com/tv/203.png

Best practice: Print on photographic paper at 8 x 10"

208-209-MODULE-2-FACIAL-FEATURES-The-Eye-7/8
profile view

Part 1. Running time: 17:30

Part 2. Running time: 20:04



Download: artacademy.com/tv/208.png

Best practice: Print on photographic paper at 8 x 10"

210-211-MODULE-2-FACIAL-FEATURES-The-Nose-frontal

Part 1. Running time: 15:12

Part 2. Running time: 10:34

Download: artacademy.com/tv/210.png

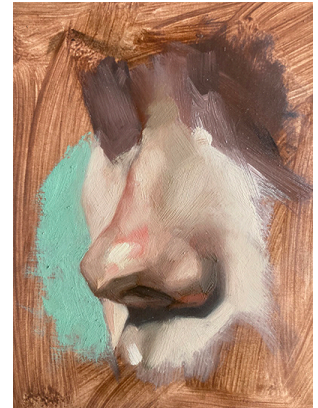
Best practice: Print on photographic paper at 8 x 10"



212-MODULE-2-FACIAL-FEATURES-The-Nose-7/8-profile-view. Running time: 22:36

Download: artacademy.com/tv/212.png

Best practice: Print on photographic paper at 8 x 10"



213-215-MODULE-2-FACIAL-FEATURES-The-Mouth-frontal

Part 1. Running time: 21:07

Part 2. Running time: 24:30

Part 3. Running time: 24:46

Download: artacademy.com/tv/213.png

Best practice: Print on photographic paper at 8 x 10"



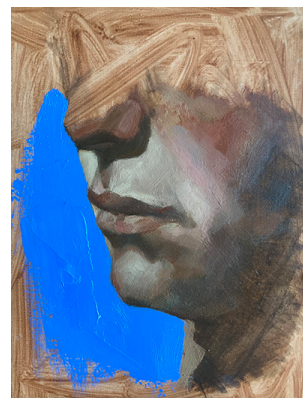
216-217-MODULE-2-FACIAL-FEATURES-The-Mouth-7/8-profile view.

Part 1. Running time: 24:04

Part 2. Running time: 24:58

Download: artacademy.com/tv/216.png

Best practice: Print on photographic paper at 8 x 10"



218-MODULE-2-FACIAL-FEATURES-The-Ear-5-Easy Pieces. Part 1. Running time: 19:31

Download: artacademy.com/tv/218.png

Best practice: Print on photographic paper at 8 x 10"

